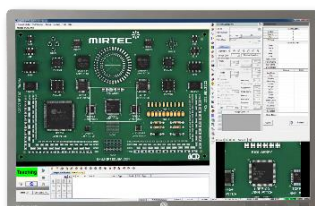
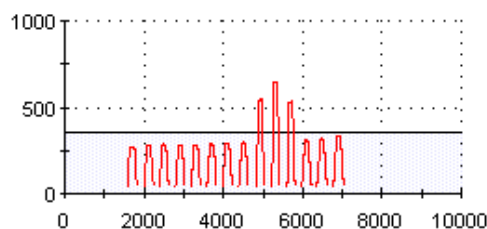


TECHNOLOGICALLY ADVANCED

MV-6E 2D AOI Series

MIRTEC

- High-Speed, High-Performance Five Camera In-Line AOI Machine
- Exclusive **TEN MEGA PIXEL** Camera Technology
- 9.8 Micron / Pixel Precision Telecentric Compound Lens Design
- Integrated Ten Mega Pixel **SIDE-VIEWER**® Camera System
- Precision Closed Loop AC Servo Drive Motor System
- Extremely Simple Programming and Operation



- Integrated **INTELLI-SCAN**® Laser Inspection System
- Superior Lifted Lead Detection For Gull Wing Devices
- Four Point Height Measurement For Co-Planarity Testing of BGA and CSP Devices
- Enhanced 3D Solder Paste Measurement Capability



www.mirtec.com

MV-6E Features and Specifications

Standard Features:

- Intel® Core™ PC w/ Windows 7™ OS, 24" Flat Screen LCD Monitor, HDD, Mouse & Keyboard, Network LAN Card.
- Single Stage High Speed Conveyor System with Programmable Width Control.
- Pre and Post Reflow Inspection Capability.
- Automatic Teaching Software w/ Comprehensive Package Type Library for Simple "Drag and Drop" Programming.
- Local Software: Repair Plus Software, Statistical Process Control (SPC) Software.

Options:

- SIDE-VIEWER® Camera System - Quantity (4) Ten Mega Pixel Side View Digital Color Cameras (See Specifications).
- INTELLI-SCAN® Laser System - Superior Lifted Lead Detection for Gull Wing Devices; Z-Height Measurement for BGA's
- INTELLI-BEAM® Laser System - Z-Height Measurement Capability for BGA and CSP Devices.
- 2D Bar Code Reader - Gun Type - 2D Bar Code Reading Capability Using Handheld Gun Type Reader.
- 2D Bar Code Reader - Camera Type - 2D Bar Code Reading Capability Using the Top Down Camera System.
- Remote Software (PC Required): Off Line Programming, Remote Repair Plus, Remote SPC, Remote Management.

System Specifications:

Top-Down View Camera Options	Field Of View	Resolution
10MP ISIS® (3,664 x 2,736) Camera Option 1	49.0mm x 36.6mm (1.93" x 1.44")	10 Mega Pixels @ 13.4 um/pixel
10MP ISIS® (3,664 x 2,736) Camera Option 2	35.9mm x 26.8mm (1.41" x 1.05")	10 Mega Pixels @ 9.8 um/pixel

SIDE-VIEWER® Camera System	Quantity Four - 10 Mega Pixel (3,664 x 2,736) Color Side Angle Cameras
INTELLI-SCAN® Laser Specifications	Z-Height Measurement Accuracy: +/- 10 um Resolution: 1 um / point Inspection Speed: 0.5 sec / point
INTELLI-BEAM® Laser Specifications	Z-Height Measurement Accuracy: +/- 20 um Resolution: 15 um / point Inspection Speed: 0.5 sec / point
Top-Down Camera Lens	Precision Telecentric Compound Lens Design
Top Side Clearance	45mm (1.77")
Bottom Side Clearance	50.8mm (2.0") From Bottom of PCB Surface
Minimum Component Inspection	01005 Chip Component.
Robot Positioning System	Closed Loop AC Servo Drive System
Resolution	1 um (.0000394 in.)
Repeatability	±10 um (± 0.000394 in.)
Maximum Inspection Speed	0.34sec / frame - 5,293 mm ² / sec (8.204 in ² / sec)
Power Requirements	Single Phase 208 VAC ± 10%; 50/60 Hertz; 5 Amps
Air Requirements	0.5Kgf / cm ² (71 PSI)

Model Number	PCB Size Range
MV-6E	50mm x 50mm to 510mm x 460mm (2.0"x2.0" to 20.1" x 18.1")

Model Number	Machine Dimensions
MV-6E	1,080mm W x 1,470mm D x 1,500mm H (42.5" x 57.87" x 59.1")

Model Number	Weight
MV-6E	950 kg (2,094.4 lbs)

